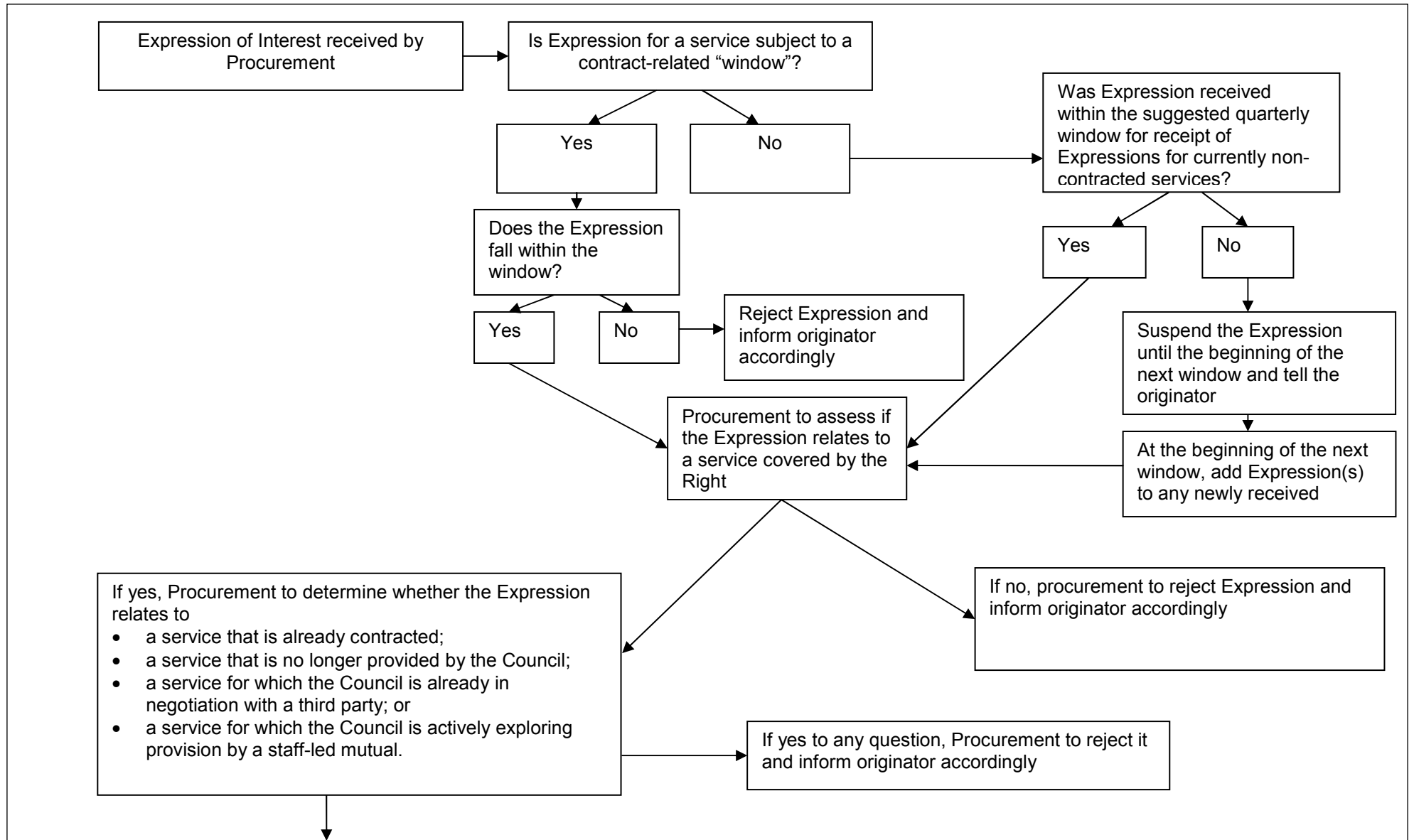


Community Right to Challenge – administrative process flow chart



↓

If Expression is still valid, procurement to assess against the criteria in the Right i.e.

- a description of the organisation's make up and formation;
- information about financial resources;
- evidence of how their proposal will work;
- identification of the service and geographical area(s) to which it relates
- Information about the outcomes to be achieved, including
  - how it will improve the social, economic and environmental well-being of the area;
  - How it will meet the needs of the users of the relevant service

→

If Expression fails any of these conditions, procurement to discuss problems with the originator to try to resolve problems. If they cannot be resolved, Expression will be rejected

↓

If Expression is still valid, it will trigger a procurement exercise. This includes issues such as consultation about how a contract can be packaged for example duration and the services to be included to ensure the best competitive response from the market and so achieve best value. This will follow the Council's Sustainable Procurement Policy and be overseen by the Strategic procurement Board.